



MONTHLY MEMBERSHIP PROGRESS REPORT

District 310 A1

Results as of: 05/31/2018

GMT: TERESA MANN

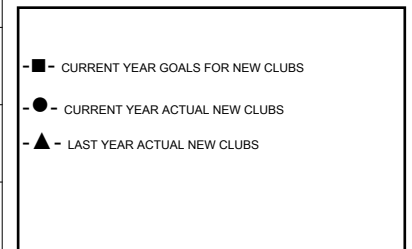
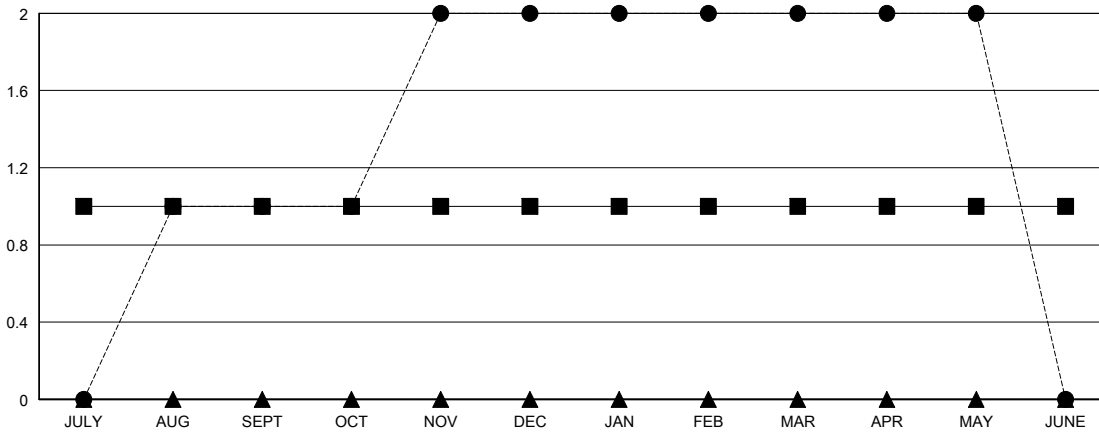
LOCATION THAILAND

GMT CA

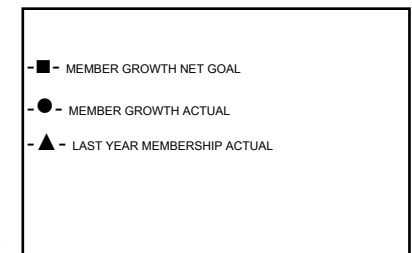
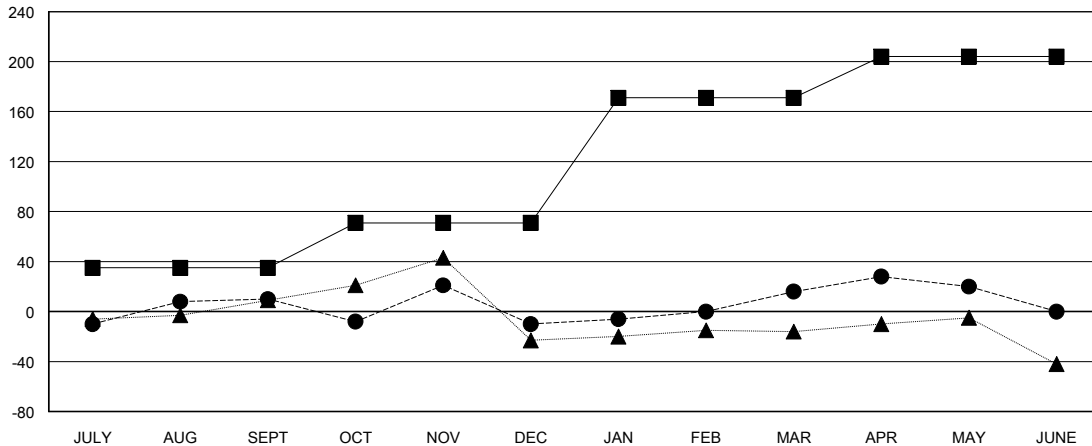
Clubs			
RESULTS FOR 2017-2018			
QUARTER	NEW CLUB GOAL	NEW CLUBS	DROPPED CLUBS
JULY/AUG/SEPT	1	1	0
OCT/NOV/DEC	0	1	0
JAN/FEB/MAR	0	0	1
APR/MAY/JUNE	0	0	0

Members			
RESULTS FOR 2017-2018			
QUARTER	MEMBER GROWTH NET GOAL	MEMBER GROWTH ACTUAL	DROPPED MEMBERS ACTUAL (including transfers)
JULY/AUG/SEPT	35	35	24
OCT/NOV/DEC	36	51	69
JAN/FEB/MAR	100	43	16
APR/MAY/JUNE	33	35	26

GOALS AND ACTUAL NEW CLUBS CUMULATIVE



GOALS AND ACTUAL MEMBERS CUMULATIVE



DROPPED CLUBS: 1

21 CLUBS OF 38 ADDED 1 OR MORE NEW MEMBERS

GENDER DISTRIBUTION	
MALE	433 (50.82%)
FEMALE	419 (49.18%)
Women Percentage Fiscal Year Goal: 48%	

DROPPED MEMBERS	
DECEASED	0
CLUB CANCELLED	0
OTHER	135
TOTAL	135

[CLICK HERE FOR CUMULATIVE MEMBERSHIP DATA](#)

TOTAL FAMILY UNIT MEMBERS	68
FAMILY MEMBERS PAYING HALF DUES	36